



ILKLEY GRAMMAR SCHOOL

A MOORLANDS LEARNING TRUST ACADEMY



Welcome to Ilkley Grammar School

OPEN EVENING 2025



Our Vision and Values

*Our vision at Ilkley Grammar School is to provide a **world-class, inclusive education** and exceptional opportunities which will enrich us both individually and collectively as a community. We will inspire, support and challenge each other to achieve our **Personal Best** so that **we all grow in wisdom and stature**. By modelling our Personal Best values and championing equality and diversity, **we will make a positive difference to our own lives and the lives of others** and will be empowered to **lead and influence positive change** on a local, regional, national and global scale.*



RESPECT



COURAGE



RESPONSIBILITY



KINDNESS



RESILIENCE



PRIDE



ILKLEY GRAMMAR SCHOOL

A MOORLANDS LEARNING TRUST ACADEMY





A caring,
supportive
and inclusive
community



Expert,
specialist
teaching and
a broad,
ambitious
curriculum



Outstanding
academic
achievement
– progress
and
attainment



A strong
focus on
Personal
Development
and student
leadership



High
expectations
and
extraordinary
opportunities



Forward
thinking and
ambitious

WHY CHOOSE ILKLEY GRAMMAR SCHOOL?



ILKLEY GRAMMAR SCHOOL

A MOORLANDS LEARNING TRUST ACADEMY



What Did Ofsted Say? (December 2024)



'Ilkley Grammar School is an amazing school. This is a school where every pupil gets the chance to shine.'



'Academic success is very high...Whether pupils excel, or need extra help, this school supports them to achieve their potential.'



'The school offers a **rich curriculum** that ensures **all students achieve well** – there is ambition for all ...**Teachers are experts** ... and **help every pupil learn.**'



'The school is **fully inclusive**. Staff believe every pupil can succeed, no matter their background or any challenge they might face.'



'An **extensive personal development offer** ensures pupils achieve their personal best. School sports, trips and a **vast range of clubs** . . .enable pupils to flourish.'



'The school is a **calm environment** where **pupils behave exceptionally well.**'



ILKLEY GRAMMAR SCHOOL

A MOORLANDS LEARNING TRUST ACADEMY



What Do Parents/Carers Say?

Over the past 7 years, **[our daughter]** has **flourished at IGS**, developing a wide circle of friends and core group of close friends; **growing in confidence and expanding her comfort zone, through a variety of extra-curricular activities**, such as Hub Helper and Sports Leader, and participation on the French Exchange and NCS; and last, but not least, **achieving outstanding academic results at both GCSE and A level. IGS truly has helped [our daughter] achieve her Personal Best.**

I wanted to pass on my huge thanks to everyone at IGS as M finishes year 13. **She genuinely has enjoyed her time at school so much and made such wonderful memories** and that is all thanks to the fantastic staff who gave helped and supported her since year 7! I am extremely grateful for all the staff who have gone that **extra mile over the years**, listening to her, marking extra papers, advising her, stretching her, giving her **the opportunity to shine and reach her full potential**. The staff who have taught her have made it a joy and a privilege.

What brings us particular pleasure has **been the growth ...in [our son's] confidence** - from presenting the wreath at the Menin Gate to playing with a scratch band with a professional group. . . to commuting on his own to work experience. **We really appreciate the wider opportunities and encouragement that he has received from the school.**

I just wanted to thank the team at IGS for everything you have done for my son ... I've personally been extremely grateful to **know how cared for he has been at school and how safe you have made him feel**. I think it's meant more to him than we'll ever know and everything you have done has really helped all of us navigate this tricky period.

We wanted to write and pass on our gratitude for the **exceptional experience** you have given [our child] during his secondary education. **The teaching staff are amazing...**We would also like to acknowledge the **work of the support and pastoral teams**. . . **who were there when needed**. . . , sometimes just keeping an eye out but we always felt you are **not only looking after his education but his emotional development as well.**



GCSE ACHIEVEMENT 2024 and 2025

ATTAINMENT	2024	2025
Attainment 8	56.5	56.3
Basics 4+ (Maths & English)	79%	85%
Basics 5+ (Maths & English)	64%	67%
% grade 9/8	21%	19%
% grade 7-9	36%	35%
% grade 4-9	83%	84%

PROGRESS 8 2024 Validated Results	
	2024 (2025 est)
Progress 8 score All students	+0.54 (+0.73) Well above average
Progress 8 score Low attainers	+0.43 Above
Progress 8 score Middle attainers	+0.58 Well above average
Progress 8 score High attainers	+0.50 Well above average

P8 Buckets	Progress score 2024 (2025 est)
English	+0.6 SIG + (+0.7)
Maths	+0.3 SIG + (+0.5)
EBacc	+0.6 SIG+ (+0.8)
Open	+0.6 SIG+ (+0.8)

The banding for this school or college is 'well above average' because the score is greater than or equal to 0.5, and the entire confidence interval is above 0.

Banding

WELL ABOVE AVERAGE

Score

0.54

Confidence interval ?

0.38 to 0.69

Progress scores	Females Progress	Males Progress	SEN K Progress
2024 P8	+0.73	+0.44	+0.48



ILKLEY GRAMMAR SCHOOL

A MOORLANDS LEARNING TRUST ACADEMY



A-LEVEL ACHIEVEMENT

How to get into Oxbridge — by the state schools that do it best

Year	No:
2025	8
2024	12
2023	10
2022	8
2021	8

Schools with most Oxbridge offers

State schools and private schools which received at least six Oxford and at least six Cambridge offers in 2024

Search in table

Page 1 of 9

School	Applied	Offers	%
St Paul's Girls' School, London	88	48	55
Westminster School, London	179	96	54
The Skinners' School, Kent	36	19	53
John Hampden Grammar School, Buckinghamshire	26	13	50
Queen Elizabeth's School, Barnet	127	62	49
King Edward VI Grammar School, Chelmsford, Essex	67	32	48
King's College London Mathematics School	63	28	44
Royal Grammar School Guildford, Surrey	66	29	44
Pate's Grammar School, Gloucestershire	96	42	44
Colyton Grammar School, Devon	45	19	42
Henrietta Barnett School, London	74	31	42
Kendrick School, Berkshire	41	17	41
Ilkley Grammar School, West Yorkshire	32	13	41

Best 3 A-Levels

	Average Grade
2024	B
2023	B
2022	B+
2021	A-
2020	B

APPRENTICESHIP SUCCESS:

PwC; Deloitte; Rolls Royce;
Channel 4; Ernst & Young;
Accenture; Morrisons; Alvarez and
Marsal; HMRC; Forvis Mazars; Jet 2

'The sixth-form provision is a shining light
within the school.' OFSTED 2024

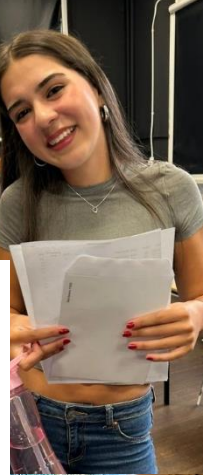
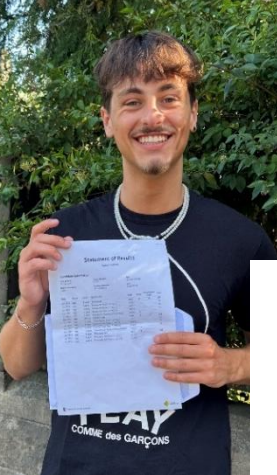


ILKLEY GRAMMAR SCHOOL

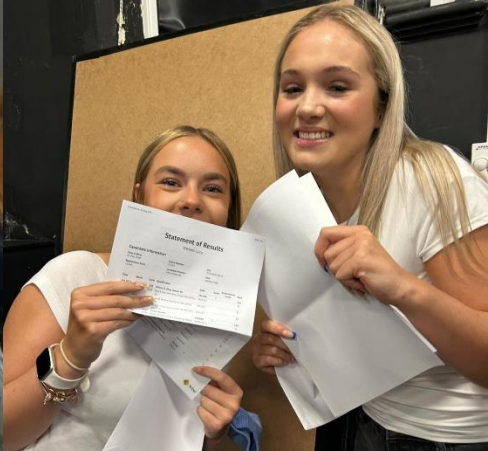
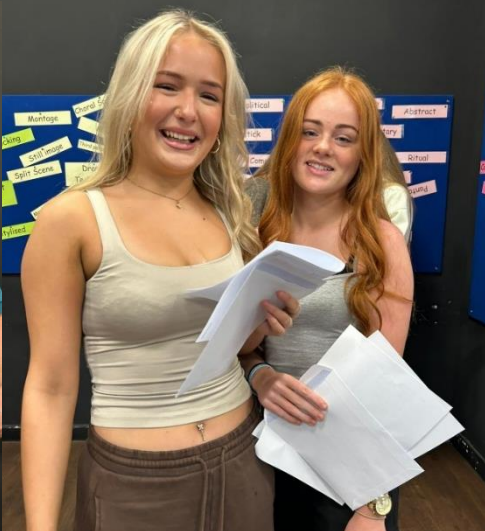
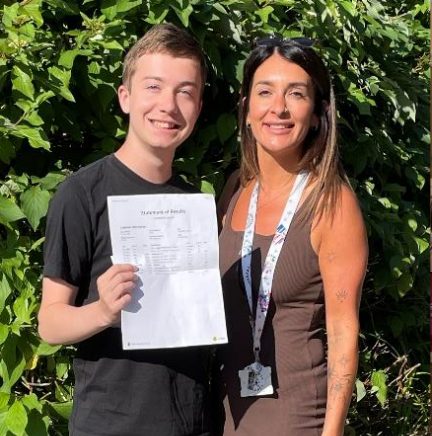
A MOORLANDS LEARNING TRUST ACADEMY

A-LEVEL	IGS A-LEVEL 2024	National Average 2024	IGS A-LEVEL 2025 (excluding remarks)
% A*	12.4%	9.3%	12.4%
% A/A*	35.2%	27.6%	32.8%
% A*-B	65.4%	53.6%	60.7%
% A*-C	84.7%	76.0%	80.5%
Pass rate	98.7%	97.1%	98.8%
Average grade	B		B
Progress score	ALPS 3 – top 25% nationally		ALPS 3 – top 25% nationally





PERSONAL BEST



As students, what can you expect from IGS?

- Lots of opportunities to succeed at what you're good at
 - ✓ In lessons, sports, music, clubs and so much more
- Help when you need it
 - ✓ During lessons, at breaks, online
- A challenge
 - ✓ To be the best you can be!

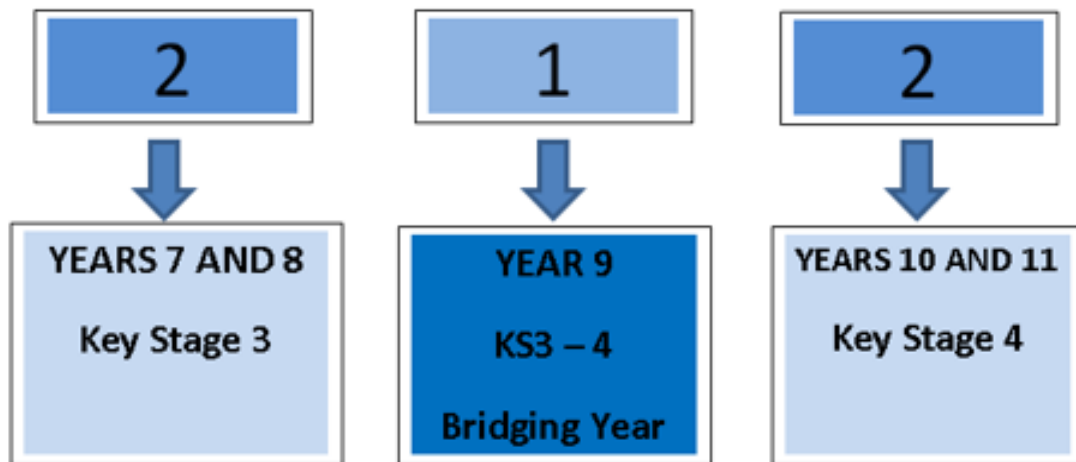


“An exceptional quality of education with a **“sophisticated”** and **“rich curriculum that ensures all students achieve well”**”

Ofsted 2024



1: KEY STAGE 3 CURRICULUM



ILKLEY GRAMMAR SCHOOL

A MOORLANDS LEARNING TRUST ACADEMY



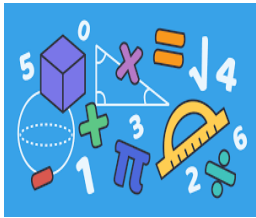
IGS Curriculum Years 7 and 8

"An exceptional quality of education with a **"sophisticated"** and **"rich curriculum that ensures all students achieve well"**

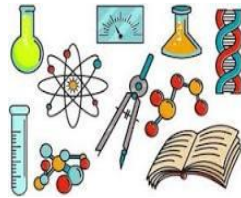
Ofsted 2024



ENGLISH



MATHS



SCIENCE



HISTORY



GEOGRAPHY



RE



LANGUAGES



MUSIC



ART



DRAMA



COMPUTING



TECHNOLOGY



PSHE/
CITIZENSHIP



ILKLEY GRAMMAR SCHOOL

A MOORLANDS LEARNING TRUST ACADEMY



IGS Curriculum Year 9

- An exciting opportunity for personalisation
- Continuation of the National Curriculum and a broad, balanced curriculum
- Supports informed decisions for GCSE



ILKLEY GRAMMAR SCHOOL

A MOORLANDS LEARNING TRUST ACADEMY



What you can expect in the classroom as a student at IGS

“pupils enjoy their lessons and behave in a way that **enables deep, meaningful** classroom learning”

“they discuss and debate through **thought-provoking** discussion” *Ofsted 2024*



Your lessons will be:

- Engaging
- Challenging yet supportive
- Inclusive and responsive to your needs
- A calm environment with clear explanations



Your lessons will promote:

- Independence
- Resilience
- Curiosity
- The build up of knowledge and skills over time
- Success so you can be proud of what you achieve



iPads for Organisation, Learning and Support

“use many strategies to help pupils learn
including the **skilful integration** of technology into lessons” *Ofsted 2024*

- ☐ Use of Outlook and Edulink for notices, emails, calendars etc
- ☐ Use of iPads to capture understanding and misconception in real time e.g Forms, Padlet
- ☐ Use of iPads to provide feedback, including verbal feedback
- ☐ Use of subject specific apps e.g GarageBand
- ☐ Use of iPads to record performance and allow for self-reflection
- ☐ Use of iPads for revision material



IGS School Day

Monday, Tuesday, Thursday, Friday

Years 7-11		
Time	Activity	Duration
8:25-8:40	Tutor Period	15 mins
8:40-9:30	Period 1	50 mins
9:30-10:25	Period 2	55 mins
10:25-10:45	BREAK	20 mins
10:45-11:35	Period 3	50 mins
11:35-12:30	Period 4	55 mins
12:30-13:15	LUNCH	45 mins
13:15-14:05	Period 5	50 mins
14:05-15:00	Period 6	55 mins

Wednesday

Years 7-11		
Time	Activity	Duration
8:25-9:05	PBT	40 mins
9:05-9:55	Period 1	50 mins
9:55-10:50	Period 2	55 mins
10:50-11:10	BREAK	20 mins
11:10-12:00	Period 3	50 mins
12:00-12:55	Period 4	55 mins
12:55-13:40	LUNCH	45 mins
13:40-14:35	Period 5	55 mins



ILKLEY GRAMMAR SCHOOL

A MOORLANDS LEARNING TRUST ACADEMY



Personal Best Time

"the school's ambitious personal development offer **which goes way beyond what is expected of schools**, with leaders ensuring there is something for everyone." *Ofsted 2024*



RESPECT



COURAGE



RESPONSIBILITY



RESILIENCE



KINDNESS



PRIDE

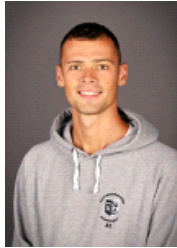
PASTORAL CARE AT IGS



Mrs Hessey



Mrs Varley



Mr Ewbank



Mr Willet



Mr Carr



Mr Calvert



Mr Ford



Mental Health Lead



Mental Health First Aiders



School Counsellors



Inclusive Learning Team



Safeguarding Team



Nurture Centre

“I wanted to let you know how grateful I was for the presentation you gave on **well-being and mental health**. I was so impressed by your **presentation**, it was one of the best webinars I had viewed, and I have seen many professionally as a GP. **It is great to know that our children’s mental health is so well supported by you all at school.**”

	£15,684 raised for charity last year		+2,000 items donated to local food banks
98 extra-curricular clubs and activities on offer		15 Performing Arts events	
	42 various iLeader opportunities		50 students awarded SSAT Gold Accreditation for Student Leadership
84 separate trips/visits 10 overseas trips		102 students participating in the Duke of Edinburgh awards	

 AUTUMN TERM 2025 IGS LIST OF CLUBS SPORTS, INTERESTS & CULTURE		
SPORTS:	CREATIVE ARTS:	OTHER:
Badminton Basketballs Cross Country Dance Groups Dodgeball Fitness Football (Boys) Football (Girls) Football (5-a-side) Hockey Rugby Rugby (tackle) Netball	Art Clubs Backstagers Bands (Rock/Pop) Chamber Group Choirs Clay Club Composition Club Drama Groups Drawing Groups Drumline Guitar Club IGS Live @ Lunch IGS Band Nights Jazz Bands Musical Theatre Group Orchestras Photography Club School Production: Billy Elliott Ukulele Group	Board Games Club Creative Writing Club Chess Club Christian Union Crochet Club Computing Club Cult Classic Literature Debating Society Dungeons & Dragons Eco Club Gardening Club KS3 Science Club Maths Clubs MFL Film Club STEM LEGO Club Teeline Shorthand Trail Maintenance



IGS PE wins School Games PLATINUM MARK!



IGS SPORTING SUCCESS 2024-2025



Boys' football U12s Leeds League champions; U16s Leeds Champions of Champions Cup winners; Post-16 team runners up in the Leeds Cup final



Girls' football U16s Leeds Cup Final winners and U16s Leeds Merit League winners; Girls' Football U15s West Yorkshire County Cup Champions; Year 7 girls' team runners up in the League and the Cup



Yorkshire Schools Golf Championship girls' overall winner, 2nd place in boys' tournament



Bradford District League Champions: U14A and U13A teams; Senior A team and U12A team runners up
Bradford School District Netball Tournament U13s winners; U12 A team 2nd place



British Schools Gymnastic Association Finals U14s Women's Pair 1st place and U19s 19 Mixed Pair 1st place
Yorkshire Acrobatics Schools' Competition: all 8 gymnasts secured at least one medal



Boys' rugby: year 8,9, 10 and 11 teams came runners up in either the Yorkshire Cup or Plate



IGS SPORTING SUCCESS 2024-25 CONTINUED!



90 IGS students formed the ball crew for the Lexus Ilkley Open, an LTA event



Y9/10 Boys 2nd place and Y7/8 Girls, Y7/8 Boys and Y9/10 Girls 3rd place in the Harrogate Division 1 Tennis league



U13 Bradford District League Rounders Champions



Cricket: Year 10 girls crowned Yorkshire Cup Winners



ESAA Cross Country Regional Finals : junior boys' team 1st place, senior boys' team 1st place, junior girls' team 3rd place;
Yr 7/8 girls, Yr 7/8 boys and Yr 9/10 girls all won the Keighley and Craven Cross Country League



Cross Country Cup National Finals: junior boys' 5th nationally, senior boys' 3rd nationally; English Fell Running Championship – 2nd place



The Lexus Ilkley Tennis Trophy



LIVE PERFORMANCES

SPORT, INTERESTS & CULTURE

**RED KITE
BATTLE OF THE BANDS**

PRIDE

RESPECT

COURAGE

RESPONSIBILITY

ARTS COUNCIL ENGLAND

Artsmark Gold Award
Awarded by Arts Council England



BATTLE OF THE BANDS



Artsmark
Gold Award
Awarded by Arts
Council England



Les Misérables



BILLY ELLIOT

THE MUSICAL

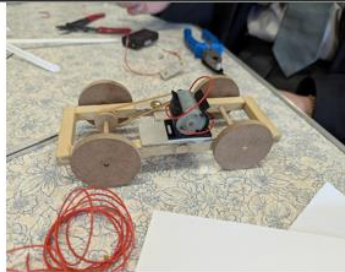


RED KITE
ALLIANCE

Provider

"SPEAK OUT" Challenge!

with Speakers Trust



D&T Pupils enjoy problem solving & success at the 2025 Rotary Technology Competition!

COMPETITIONS



PHOTO COMPETITION!

This year the Eco-ILeaders will award PRIZES TO THE BEST 3 PHOTOS of the school's wild flowers during No Mow May.

Send your entries to ecoleads.mlt.co.uk by Sunday 17 June

1st Prize - £30 voucher
2nd Prize - £20 voucher
3rd Prize - £10 voucher



Outstanding

LEADERSHIP OPPORTUNITIES

Year 7 & 8

Creative Arts Council
Community iLeader
Diversity iLeader
Eco iLeader
Front of House iLeader
Library iLeader
Model United Nations
Sports Council
Student Council

Year 9

Creative Arts Council
Community iLeader
Diversity iLeader
Drama Club iLeader
Duke of Edinburgh Award
Eco iLeader
Front of House iLeader
Library iLeader
Model United Nations
Sports Council
Student Council

Years 10 & 11

Creative Arts Council
Community iLeader
Debating iLeader
Diversity iLeader
Drama Club iLeader
Drama/Theatre Studies Ambassador
Eco iLeader
Front of House iLeader
LGBTQ+ Safe Space iLeader
Library iLeader
Media iLeader
Model United Nations
Music iLeader- Choir
Music iLeader- Technician
Rock Band iLeader
Sports Council
Student Council
Vocal Captain

Years 12 & 13

Art iLeader	Business/Economics iLeader
Creative Arts Council	Community iLeader
Debating iLeader	Diversity iLeader
Drama/Theatre Studies Ambassador	Drama Subject Support iLeader
Drama/Theatre Studies Subject Mentor	Eco iLeader
Front of House iLeader	Head Students/P16 Leadership
LGBTQ+ Safe Space iLeader	Library iLeader
Media iLeader	MFL- French/Spanish iLeader
Model United Nations	Model United Nations Head iLeader
Music iLeader- Club/Classroom Assistant	Music iLeader- Technician
PE iLeader (Sports Technician)	Photography iLeader
Politics iLeader	PR and Marketing iLeader
PSHE iLeader	P16 Literacy iLeader
P16 Revision/Studies Mentor	P16 Shared Reading iLeader
Rock Band iLeader	Sports Council
STEM Challenge iLeader	Student Council
Vocal Captain (School Production)	Transition Ambassador iLeader
	Wellbeing Coach



WE'RE SUPPORTING

BBC

CHILDREN IN NEED



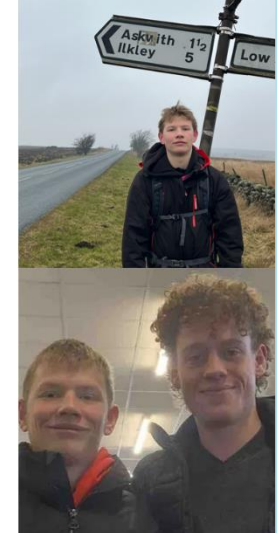
FRIDAY 17TH NOVEMBER

© BBC 2022. This charity project is made by BBC Children in Need and is not a BBC production. All rights reserved. No part of this project may be reproduced without the prior written permission of BBC Children in Need.




DementiaUK
Helping families face dementia

Charity work and support




COMIC RELIEF
RED NOSE DAY
FRIDAY 21 MARCH




ACTIVE CITIZENSHIP & COMMUNITY



Year 8 London trip



Year 9 Lakes Trip



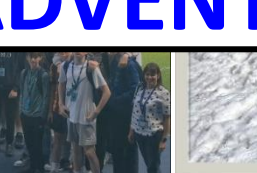
DISCOVERY AND ADVENTURE



Nell Bank September 2024

DISCOVERY AND ADVENTURE

Livigno April 2025



Belgium battlefields October 2024



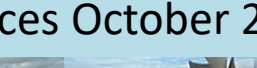
Bay of Naples November 2024



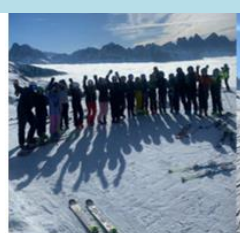
Etihad Stadium
May 2025



Gitschberg-Jochtal February 2025



Coutances October 2024



SCHOOL REBUILDING PROGRAMME

Transparency data School rebuilding programme: third set of 61 schools

Published 12 July 2022

Applies to England

Contents	The third set of schools in the school rebuilding programme, grouped by local authority with their unique reference number (URN).
Birmingham	
Bradford	
Brent	
Cheshire West and Chester	
County Durham	
Croydon	
Darlington	
Derby	
Derbyshire	
Ealing	
Enfield	
Essex	
Gateshead	
Hammersmith and Fulham	
Hertfordshire	
Hounslow	

Birmingham

131920 Four Oaks Primary School

134774 New Oscott Primary School

103295 Welsh House Farm Community School and Special Needs Resources Base

Bradford

136905 Ilkley Grammar School

Plans approved for major redevelopment of Ilkley Grammar School

6TH MAY EDUCATION PLANNING AND DEVELOPMENT ILKLEY



Duo of school starts for West Yorkshire

28 July 2025 12:26 • Sally Gibson • Comments (0)



Work has started on the £52m overhaul of Ilkley Grammar School,





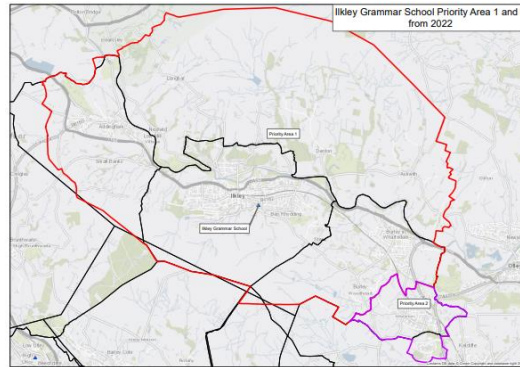
ILKLEY GRAMMAR SCHOOL

A MOORLANDS LEARNING TRUST ACADEMY



Admissions September 2026

- **Postcode (straight line distance) not feeder school** is measure for admissions
 - LAC/EHCP – Sibling Priority 1, Priority 1, Sibling Priority 2, Priority 2- then 'out of area' with sibling followed by all 'out of area'



- We are as confident as we can be that we can now accommodate all students from Priority 2 - Menston who would like to attend IGS, as well as Priority 1
- Priority 2 catchment includes the High Royds Estate and Moorland Crescent
- Please consult our Admissions Policy and take independent advice from BMDC. **Representatives are available in Armitage.**