



IGS PARENT/CARER Y7 TRANSITION HANDBOOK 2026



Class of 2031 Silver Ties



Head's welcome – Mrs Carly Purnell



Dear Parents/Carers,

It gives me great pleasure to welcome you to Ilkley Grammar School. Whether this is your first child joining us or you are already part of our school community, we are delighted to have you with us. Having been Headteacher here since September 2020 and, prior to this, Deputy Head for the previous seven years, I know the school very well and can say confidently, as both a senior leader and an IGS parent myself, that your child is joining an “amazing” school which provides both an outstanding education and extensive extra-curricular, enrichment and leadership opportunities.

In line with our Latin motto which means “growing in wisdom and stature”, we are committed to both academic excellence and the development of well-rounded young people who have the skills and qualities to make a positive difference through the lives they lead and the choices they make. While we challenge and support students to reach their full potential, we also nurture confidence, resilience, and a strong sense of social responsibility. We believe students thrive in a warm, inclusive environment where kindness, courage and respect are championed, and well-being is a priority. As we start what we hope will be an exciting seven-year journey, we look forward to caring for, inspiring and supporting your child’s academic development and personal growth, ensuring they feel valued and empowered to succeed and that they can be proud of who they are and what they achieve.

We have a strong and well-established transition programme and the first of our events takes place this half-term on **Thursday 19th March**. The evening will launch this year’s transition process and will allow us to introduce key colleagues from the transition team, as well as providing further important information. Additionally, we will be visiting local primary schools in May and June for our Transition Roadshows, allowing year 6 students to ask questions to a member of the transition team and our student ambassadors. Year 6 students will also visit IGS for two days in the summer term: an IGS Discovery Day where they will sample curriculum lessons, as well as the Transition Day on **Tuesday 30th June** when they will meet their new tutor group. The Transition Day for students is also followed by a Parents’ Welcome Meeting which is scheduled for **Monday 6th July**. As an addition to the transition calendar this year, on **Saturday 27th June** there will be an opportunity for the Ilkley community to come together at the East Holmes Field Park Run and your family is warmly invited to join students and staff to walk or run the course. We hope this event will generate a real buzz and reinforce a sense of belonging.

We are already working closely with primaries to learn more about your child and will ensure each student is placed in a tutor group with at least one friend – although this may not be their best friend, it will be someone with who they are comfortable with. For those coming to IGS as the only child from their primary school, we will carefully pair them with others in the same position and will provide plenty of support to **all students** to help them settle and integrate successfully.

Should you have any specific questions about transition, please do get in touch in term time by emailing transition@igs.mlt.co.uk and one of the team will get back to you. If you are wanting to request a specific language, French or Spanish, you can do this through Applicaa – details of which are contained in this handbook. Please note, we are unable to accommodate general preferences based on the language studied at primary school but will ensure that requests from native speakers and children whose parents are native speakers or language teachers are met. Requests should be indicated no later than **Wednesday 3rd June**; after this point they will not be able to be taken into consideration. Parents of children with a diagnosis of SEND should email our Inclusive Learning team for specific SEND related questions at: inclusivelearning@igs.mlt.co.uk

We are very much looking forward to working closely with you and your child over the next few months, and to the beginning of a strong and positive partnership. We understand that moving on to secondary school can be daunting for some students and their families, and we are committed to keeping you informed and working with you to make the process as seamless as possible.

Kind regards,

Mrs Carly Purnell
Headteacher



A summary of the transition team

Your child will have a wealth of support at IGS. Below is our core 2026 team who will guide the silver tie cohort through their first academic year at IGS and beyond! Students will have the chance to meet many of the key pastoral staff multiple times through the transition programme and parents/carers will have the first opportunity to meet some of them at the parent/carer transition launch evening on **Thursday 19th March**.



Mrs Hessey



Mrs Allan



Mr Ewbank



Mr Willet



Mr Carr



Mr Calvert



Mr Ford



Mrs Barton



Mrs Sturgess



Mrs Johnson



Mrs McManus

The core transition team:

- Dedicated Head of Year: Mrs Hessey
- Assistant Head of Year: Mrs Allan
- Transition Lead: Mr Ewbank
- Progress and Experience Leader (PrExL): Mr Willet
- Assistant Headteacher: Student Experience KS3: Mr Carr
- Assistant Headteacher: Attendance and Safeguarding: Mr Calvert
- Deputy Headteacher: Behaviour and Attitudes: Mr Ford
- KS3 Inclusive Learning Manager: Mrs Iliff
- Attendance Officer: Mrs Barton
- Student and Family outreach specialist: Miss Sturgess
- Safeguarding Officer: Mrs Johnson
- Safeguarding Officer: Mrs McManus



Beyond the core team:

Beyond the core team, there are multiple staff involved with helping students to *grow in wisdom and stature*.

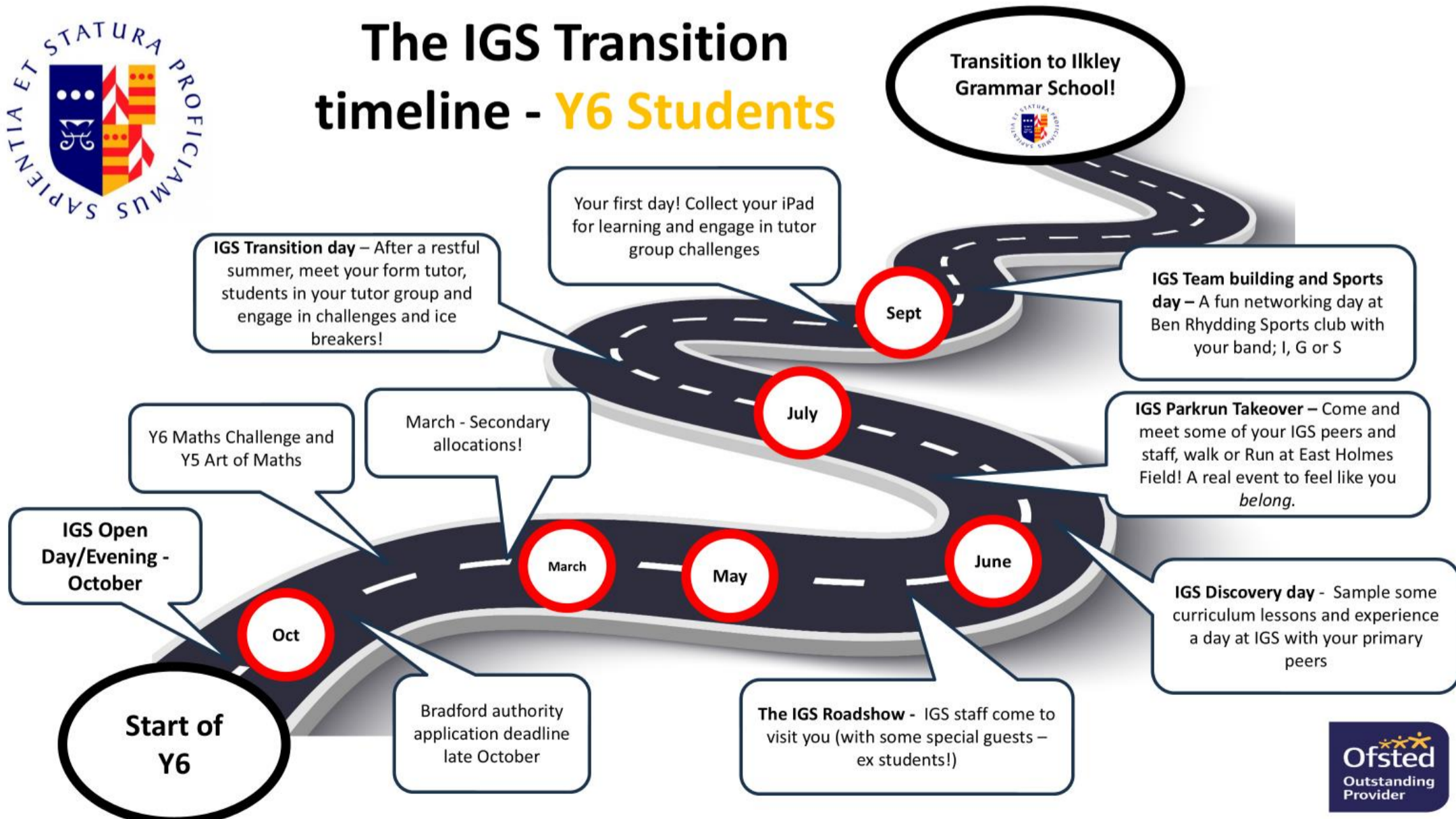
- SENDCo, Deputy SENDCos and the Inclusive Learning Team
- Form tutor/s
- Mental Health Lead
- School counsellors
- Safeguarding Officers
- Nurture Lead
- 100 trained staff mental health first aiders



The transition programme overview

We are very excited to reveal the IGS 2026 Transition programme for our new silver tie cohort. We are very confident that the programme will help students feel prepared for the transition to secondary school, ensuring they equip themselves with relevant interpersonal skills to thrive at IGS, demonstrating *Pride* in their learning and their *Personal Best*. Students will embark upon their personal development journey in summer 2026 in year 6 and will arrive at IGS having already started 'Growing in Wisdom and Stature' in line with our Latin motto 'sapientia et statua proficiamus'.

Y6 Transition Roadmap showing all the stops in the Y6 journey!



PRIDE



RESPECT



COURAGE



RESPONSIBILITY



KINDNESS



RESILIENCE

Key transition dates 2026

Date	Activity
Friday 13 th March	Acceptance of place at IGS deadline via Applicaa system (NOT paper return)
Thursday 19 th March	Parent/carer transition launch evening
Ongoing through transition period	Contact with primary schools and SENDCos
Summer term	The IGS Roadshow!
Summer term	IGS Discovery Days
Ongoing through transition period	Triangulation meetings (IGS – Primary – SENDCos)
Saturday 27 th June	IGS Parkrun Community Takeover!
Tuesday 30 th June	Y6 Transition Day
Monday 6 th July	Parent/carer welcome evening
Wednesday 2 nd September	First day of Y7
Early September	IGS Teambuilding and sports days

Main student transition events in greater detail:

The IGS Roadshow:

This provides students the opportunity to find out all they want to know about IGS and their transition journey! They will enjoy a visit at their primary school from some of the year 7 pastoral team to give them a flavour of what life as a pupil at Ilkley Grammar School will be like and give them the chance to ask any questions they have ahead of secondary transition in summer 2026. They will also learn about some important mantras and policies to follow at IGS, with some helpful hints and tips given by current IGS students. They may even receive a visit from a familiar face who used to go to their primary school!



The IGS 'Discovery Day':

This is chance for year 6 students to really understand what life at Ilkley Grammar School is really all about! They will spend a day at IGS enjoying a sample of some lessons in the specialist classrooms, being taught by subject experts. They will also get to see the IGS site fully in operation during the school day and will enjoy break and lunch in one of our catering areas. In taster lessons, we will be looking to challenge students, encouraging them to be inquisitive and to try their *Personal Best*, whilst showing *Pride* in their work. Who will be able to solve the 'who done it' science DNA experiment? How will individuals work as a team to win dodgeball? What composition can be created in music? The opportunities for exploration and discovery are endless.



PRIDE



RESPECT



COURAGE



RESPONSIBILITY



KINDNESS



RESILIENCE

Y6 Transition Day:

This is the final step on the transition roadmap before students leave their primary schools and join the IGS team! On the Transition Day, they will attend IGS with the whole new year 7 cohort. We look forward to welcoming them all in their first assembly, before they meet their new form tutor and the rest of their tutor group. During the day they will explore the school site once again to aid orientation, engage in some tutor group icebreakers and activities, enjoy lunch at IGS and meet key members of staff.



IGS Community Parkrun Takeover - Saturday 27th June:

An opportunity for the Ilkley community to come together to generate a real buzz and sense of belonging to the IGS and wider community. This event will use sport (Park running or walking) as the vehicle to help students further develop social confidence and connections ahead of transitioning to IGS. Prospective IGS students, transitioning students, current students, parents/carers, alumni and staff will all come together with the rest of the Ilkley Community to enjoy the heartwarming effects of social exercise in the local community and further push a sense of belonging at IGS no matter the pace or style of Park running or walking. Staff and students will be on hand to answer any further queries and also be involved in the event by marshalling, pacing and cheering Park runners and walkers along. This is chance for IGS to give back to the Ilkley community; a community we all love and to which we belong.



September teambuilding and sports day:

In September, our Year 7 will enjoy a day of team building and sports activities at Ben Rhydding Sports club with tutor groups within their band. On this day, they will engage in some sporting activities and some mind-boggling team building strategy challenges which will put their communication and creativity to the test. This is the final stop on the transition roadmap; we have every faith that students will make a seamless transition to IGS following this programme of events.



PRIDE



RESPECT



COURAGE



RESPONSIBILITY



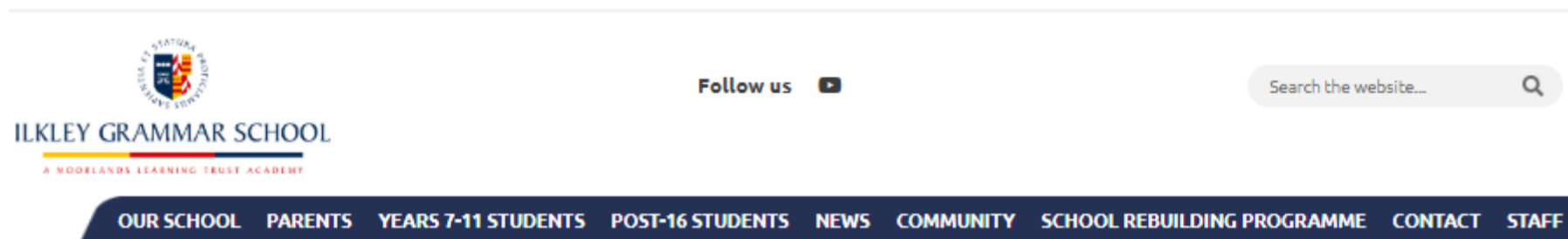
KINDNESS



RESILIENCE

Where can I find information easily?

Our Ilkley Grammar School website is an expansive resource which will serve as a one-stop-shop for all your school information ahead of IGS transition. The website link can be found [HERE](#) and the navigation bar of the webpage is pictured below. The most important sub-pages of the website to navigate have been listed below with navigation pathways and direct links.



Transition website page:

To specifically navigate to the 'Transition webpage, navigate: Our School > Transition to IGS. Here you will find an abundance of information including the Y7 team staff, transition programme and FAQ's.

<https://www.ilkleygrammarschool.com/our-school1/transition-to-igs/>

Our 2024 'Outstanding' Ofsted report:

Ilkley Grammar School was judged outstanding in all five categories of Quality of Education, Behaviour and Attitudes, Personal Development, Sixth-form provision, and Leadership and Management. Following a two day inspection on December 10 and 11, 2024, the Inspection Team concluded: "Ilkley Grammar School is an amazing school" where "every pupil gets a chance to shine". To read further, or delve into the full Ofsted report, please follow the direct links below.

<https://www.ilkleygrammarschool.com/our-school1/ofsted/>

[Ilkley Grammar School OFSTED report Dec 2024](#)

School policies:

To specifically navigate to our school policies, navigate: Our School > Policies.

<https://www.ilkleygrammarschool.com/our-school1/policies/>

Attendance and Absence:

To specifically navigate to our Attendance and Absence page, navigate: Parents > Attendance and absence.

<https://www.ilkleygrammarschool.com/parents/attendance-and-absence/>

'One Minute Guides':

To specifically navigate to our area for bitesize 'One Minute Guides' on;

- Demonstrating the Personal Best Values in the classroom
- Completion of homework and coursework
- Uniform (including jewellery and make-up) and PE Kit
- Mobile Phones and Earphones
- Personal Best in the community
- Attendance at Ilkley Grammar School
- Punctuality to school and lessons
- Safeguarding
- Parent and Carer communication

navigate: Parents > One Minute Guides

<https://www.ilkleygrammarschool.com/parents/one-minute-guides/>



PRIDE



RESPECT



COURAGE



RESPONSIBILITY



KINDNESS



RESILIENCE

Trips, visits, and 'Challenge and Celebration week:

School trips and outdoor enrichment opportunities are an important and memorable part of our education. To specifically navigate to trips and visits, or Challenge and celebration week, navigate: Years 7-11 Students > Trips and visits OR Challenge and Celebration week (Post 16 information is available via the post-16 website tab).

<https://www.ilkleygrammarschool.com/students/trips-visits/>

<https://www.ilkleygrammarschool.com/students/challenge-and-celebration-week/>

School rebuilding programme:

To view more information about the IGS school rebuilding programme, please follow the link below. You can also watch an architect's impression video on Youtube [HERE](#). We are **very** excited for what the future holds for our outstanding school. We know that this improvement to the school buildings will provide an enhanced environment and facilities for all students, staff and the wider community.

<https://www.ilkleygrammarschool.com/school-rebuilding-programme/>

IGS Vision, values and personal development

As an outstanding comprehensive academy, our overriding aim is for all students to enjoy a world-class, inclusive education and for them to achieve their '**Personal Best**' - from year 7 right through to Post-16 and beyond.

IGS vision statement

*"Our vision at Ilkley Grammar School is to provide a **world-class, inclusive education** and exceptional opportunities which will enrich us both individually and collectively as a community. We will inspire, support and challenge each other to achieve our **Personal Best** so that **we all grow in wisdom and stature**. By modelling our Personal Best values and championing equality and diversity, **we will make a positive difference to our own lives and the lives of others** and will be empowered to **lead and influence positive change** on a local, regional, national and global scale."*

The concept of **Personal Best** is at the heart of Ilkley Grammar School and reflects our high expectations. Whilst we challenge and support all students to enjoy success and fulfil their academic potential, we also want our young people to be exceptional citizens who can genuinely make a **positive difference** through the lives they lead. In other words, we want them to **grow in wisdom and stature**, in line with our Latin motto, acquiring knowledge but also growing in character with the confidence, skills, qualities and values to make a valuable contribution to society.

To achieve our vision, our work and our relationships are guided by our **6 Personal Best** values: **Respect; Responsibility;**

Resilience; Kindness; Courage and **Pride**.

These values shape our culture and permeate everything we do as members of the IGS Community



PRIDE



RESPECT



COURAGE



RESPONSIBILITY



KINDNESS



RESILIENCE

RESPECT

We respect ourselves, others, our environment and our community.
We respect the right of others to work, learn and share knowledge



COURAGE

We have the courage to support and challenge others.
We have the courage to use our voice to make a positive difference.

RESPONSIBILITY

We take responsibility for our own learning and motivation.
We take responsibility for our own health and safety and for those around



KINDNESS

We are kind and supportive to each other and celebrate diversity and individuality.
We are kind to ourselves and value the importance of self-care

RESILIENCE

We have the resilience to overcome barriers, learn from our mistakes and strive to improve.
We have the resilience to persevere when faced with challenge and hard thinking.



PRIDE

We take pride in our school and wider community.
We take pride in our learning, achievements and personal development.



PRIDE



RESPECT



COURAGE



RESPONSIBILITY



KINDNESS



RESILIENCE

Our vision for Personal Development

The concept which underpins our vision for Personal Development is that it is a **web of skills, knowledge and experiences**, developed over time, that is **unique** to every child, and which prepares them for their future – whatever that may be.

What are the Personal Development strands?

There are **8 Personal Development strands** in the model we have developed at IGS. These strands **interconnect** and **overlap** but we believe that everything a student will do either in or out of school, and the knowledge and skills they acquire on that journey, fits into one of the following categories:

The eight strands of personal development:

1. Active Citizenship & Community
2. Leadership & Influence
3. Scholarship & Curiosity
4. Next Steps & Careers
5. Sport, Interests & Culture
6. Health & Wellbeing
7. Respect, Equality & Diversity
8. Discovery & Adventure



Where does Personal Development take place?

At IGS we think of Personal Development as a **curriculum** which takes place both **within and beyond the subjects that students study** in the classroom. We have made sure that there is a **core set of Personal Development activities** that all students will access through things like assemblies, tutor time and Personal Best Time as well as a rich set of additional opportunities that students can opt into.

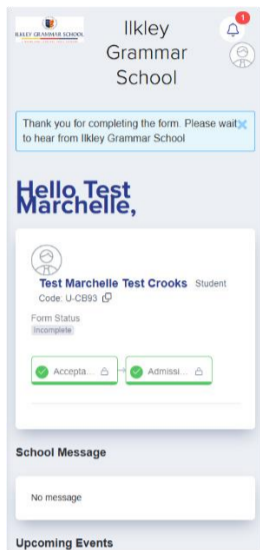
These additional opportunities may be organised by school, but they may also take place out of school. What we are aiming to offer students is a rich set of **interconnecting experiences** as we know that *'the more we do the more we become'*.



Accepting your child's place at IGS - Applicaa

To accept your child's place at Ilkley Grammar School, please accept digitally via our *Applicaa* system. Your formal offer letter from the Bradford Education Authority for all school allocations within the district will have a paper return slip at the bottom of the offer letter, please DO NOT accept using that format.

Acceptance deadline date = **Friday 13th March**



After you have successfully logged in you will see important messages and upcoming events regarding the IGS Transition programme as well as a link to the form for each of your children who have been offered a place at school.

This area is your application dashboard.

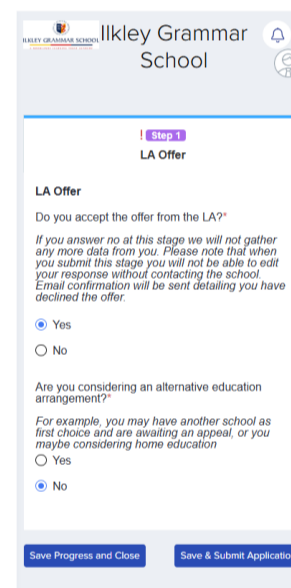
The important first step here is to accept or decline your offer. You will initially therefore only see one phase of the application process.

To accept the offer, please indicate by selecting Yes at this phase.

To decline the offer, please indicate by selecting No at this phase.

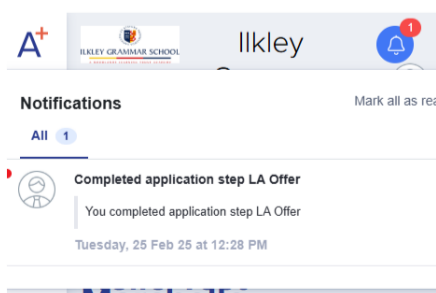
Note that we have an obligation to inform the local authority of any educational arrangements you may choose instead of IGS.

'Save and Submit' your application to complete the offer phase.



This completes the initial phase that needs to be submitted by Friday 13th March.

The next phase is detailed below. Further information about this will be available in the initial Transition Welcome Evening. You are free to start completing this next phase beforehand though!



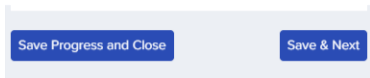
You may notice that you will get notifications appearing in the bell icon at the top of the screen.

This helps you keep track of your progress and if there are any new items in the event calendar.



You can also keep track of the progress when you get to the second phase of the application.

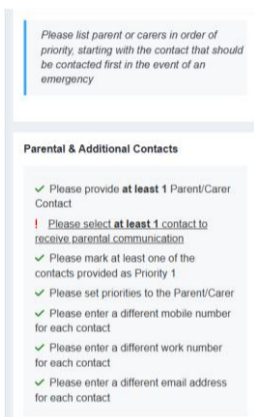
There are 6 parts to the form; they do not need to be completed all at once and you can jump back into the form where you left off by clicking the button on your application dashboard.



The first step of this phase is to tell us the basic details about your child.

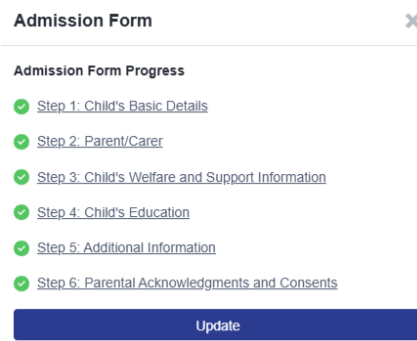
We have filled in some of this for you from the information we have been given by the local authority.

Please do check we have the correct spelling as this will eventually be used for important documents like exam certificates!



You will then tell us about any welfare information that concerns your child.

This includes if they are or have ever been in local authority care, they are a 'Young Carer', any Special Educational Needs, if they are in receipt of free school meals and if they have any medical conditions or dietary requirements.



The buttons at the bottom of each step allow you to save what you have done and return to the application dashboard or move onto the next step of the phase.

The second step is to tell us about you and anyone else that may have a legal right to supporting your child at school and knowing their progress.

The local authority did not pass on your name so please change your first name and surname as appropriate. If you already had an application in progress in Applicaa then the system has matched your record from your email address.

You will see that a separate box appears if you need to add details of 'In Care' or 'Young Carer' status

Please remember that according to the DfE, a child is seen to be a 'Young Carer' if they are under 18 and help look after a relative with a disability, illness, mental health condition or a drug/alcohol problem.

We have already selected the SEN status from the data provided by the local authority.

Please only change this if this has recently changed.



To keep your child safe in school and during any educational visits it is important to inform us of any of your child's relevant medical conditions.

For each condition, please provide details of any symptoms and appropriate treatments.

Hayfever X Asthma X

Please explain symptoms*

For each condition specified above, please provide the symptoms that staff need to be aware of if the condition becomes apparent

Please make it clear which condition you are explaining the symptoms for. You do not need to explain every condition; please only help us where you are aware that additional information would be of assistance in an emergency

He will often go unusually quiet when his asthma flares up

Please then provide us details on how to treat each condition, making it clear which one it refers to.

See the example on the right.

Specific Dietary Needs

Please select from the existing list. Again you can type in the space to narrow down the available options.

If you have added a medical condition above that requires a specific dietary requirement please ensure it has been added here too.

No Celeriac X No Raw/Unpasteurized Milk X

No Shellfish X

The next step is to provide details of your child's current schooling.

We have added the school according to the data provided the local authority.

Does the child have any of the following?

Please leave blank if any part of the form is not required

Does your child have any medical conditions?*

Yes

No

The first box will allow you to select the medical conditions that you believe we should know about. Select these from the list; note that typing into the text box will narrow down what is available in the list.

You can then tell us of relevant symptoms that your child may exhibit if the conditions arise. Please explain each of the condition symptoms here, making it clear to which condition they are referring. In the example on the left, you can see that the asthma is included, and the hayfever is not included as general symptoms are apparent in the latter.

Please explain any treatment that is needed*

For each condition listed above, please clearly indicate the treatment needed to resolve the issue, including whether the treatment is/can be self-administered

Again, please make it clear which condition you are explaining the treatment for.

You do not need to provide a treatment for every condition; please only help us where you are aware that additional information would be of assistance

Please remember to add any dietary requirements for the medical condition in the next question below the response for treatment

He has an inhaler that he carries at all times. An extra inhaler will need to be stored in school for emergencies.

He self-administers antihistamine for his hay fever.

Next please provide any dietary requirements that affect your child.

Again select these from the list; note that typing into the text box will narrow down what is available in the list.

Please make sure that if any medical condition requires a special diet, this is also included in this section.

Child's School History*

Please select your current school in the space below.

To help you select the correct school we have listed our partnership primary schools that you can copy and paste into the field (which allows you to select from any school in the UK)

- Addingham Primary School
- Burley and Woodhead CofE Primary School
- Burley Oaks Primary School
- Menston Primary School
- Ashlands Primary School
- All Saints' CofE Primary School
- Ghyll Royd School and Pre-School
- Moorfield School & Nursery
- Westville House School
- Askwith Community Primary School
- Ben Rhydding Primary School
- The Sacred Heart Catholic Primary School

Child's current school*

All Saints' CofE Primary School - Ilkley LS29 9BE

I can't find the school



Current Siblings

These are students currently studying at Ilkley Grammar School

If the applicant has a sibling already attending this school, please add their details here.

Add Sibling

Former Siblings

These are students that are no longer studying at Ilkley Grammar School

Please add the details of any individuals who are former students of this school and are related to the applicant.

Add Former Student

Each child learns either Spanish or French in Year 7 and 8.

As per the headteacher's letter, please only provide a preference where there is a valid, acceptable reason.

iPad Scheme

Do you need to sign up for the school iPad scheme?*

Yes

No - we will provide the iPad

The final step is to read the policies and information on consents that you are to accept as appropriate.

The first part of this lists the policies which will need to be read before your child starts at IGS.

- Acknowledgement of Policies
- Use of Images
- Biometric Data
- School Closure - permission to leave the site

Save Progress and Close

Previous

Save & Submit Application

Please let us know if you have any or had any children at IGS.

Language Learning

If you wish to request a specific language for your child please use the appropriate option below.

Please note that we are unable to accommodate general preferences based on the language studied at primary school but will assure that requests from native speakers and children whose parents are either native speakers or language teachers.

MFL (Language) Choice*

French

Spanish

No Preference

Reason for Language*

Native Speaker

Parental Native Speaker

Parental Language Teacher

Other

As an iPad school, students will use a device during their school day.

We have a scheme that helps provide and maintain the device, allowing you to spread out the cost. Please indicate whether you would like further details on the scheme.

Acknowledgement and Consents

By submitting the application for your child you are acknowledging that you have read and understood the items below

Moorlands Learning Trust and IGS Policies

The full list of our public policies can be found on our website. Please follow the link below to view these:

<https://www.ilkleygrammarschool.com/our-school/policies/>

By submitting this application you are agreeing to each policy.

Please acknowledge that you have read the policies, then let us know whether you consent to the use of images, biometric data and if you are happy with your child leaving the school site in case of an emergency.

As a school we share data with youth support services. There is notice here that you may opt-out of this after your child is 16.

There is also a privacy notice from the Learning Records Service that you will need to read.

Lastly, please tell us about how your child normally gets to school before you 'Save & Submit Application'. Clicking this option will prevent further changes by yourself.



Term dates 2026/2027:



ILKLEY GRAMMAR SCHOOL

A MOORLANDS LEARNING TRUST ACADEMY

Term Dates: 2026-27

AUTUMN TERMS 2026

Tuesday	1	September	Staff Training Day (school closed to students)
Wednesday	2	September	Year 7 return to school. Year 12 induction
Thursday	3	September	Term starts for years 8-11
Friday	4	September	Year 12 lessons commence. Year 13 return to school
Half term holiday: Monday 26th October – Friday 30th October			

Monday	2	November	Re-open
Friday	27	November	Staff Training Day (school closed to students)
Friday	18	December	Close (12.30pm)
Christmas holiday: Monday 21st December – Friday 1st January			

SPRING TERMS 2027

Monday	4	January	Re-open
Friday	12	February	Close (3pm)
Half term holiday: Monday 15th February – Friday 19th February			

Monday	22	February	Re-open
Thursday	25	March	Close (3pm)
Easter holiday: Friday 26th March (Good Friday) – Friday 9th April			

SUMMER TERMS 2027

Monday	12	April	Re-open
Monday	3	May	May Day (school closed)
Friday	28	May	Close (3pm)
Half term holiday: Monday 31st May – Friday 4th June			

Monday	7	June	Re-open
Friday	16	July	Close (12.30pm)
Summer holiday: Monday 19th July – Tuesday 31st August			



PRIDE



RESPECT



COURAGE



RESPONSIBILITY



KINDNESS



RESILIENCE

Extra-Curricular opportunities at IGS:

There are an inordinate number of opportunities outside of the classroom for students at IGS. Currently, there are nearly 100 extra-curricular clubs and activities on offer, giving everyone a place to **belong** and grow in **wisdom and stature**.



Some of our extra-curricular and activity headlines in 25/26 include:

- £15,684 raised for charity last year
- +2,000 items donated to local food banks
- 98 extra-curricular clubs and activities on offer
- 15 Performing Arts events
- 42 various iLeader opportunities
- 50 students awarded SSAT Gold Accreditation for Student Leadership
- 84 separate trips/visits
- 10 overseas trips
- 102 students participating in the Duke of Edinburgh awards



Gold Arts mark Award for IGS:

We are delighted to announce that in January 2025, we were awarded the Gold Artsmark by Arts Council England, in recognition of our high-quality arts provision and ‘championing’ arts and culture:

“Ilkley Grammar School provides students an arts rich education and a wide range of opportunities to perform and take part in the arts”

“There is a rich arts and cultural offer, students work with a wide range of arts organisations and artists... [linking] to local creative practitioners and organisations and provide arts opportunities and performances for local schools.”

“Students contribute actively to the planning and delivery of authentic arts, cultural and creative experiences”



**Artsmark
Gold Award**
Awarded by Arts
Council England



PRIDE



RESPECT



COURAGE



RESPONSIBILITY



KINDNESS



RESILIENCE

Trips and visits and 'Challenge and Celebration week':

School trips and outdoor enrichment opportunities are an important and memorable part of our education. They enhance learning, improve relations with staff in the classroom and help students to become more independent, grow in self-confidence and develop teamwork and leadership skills.

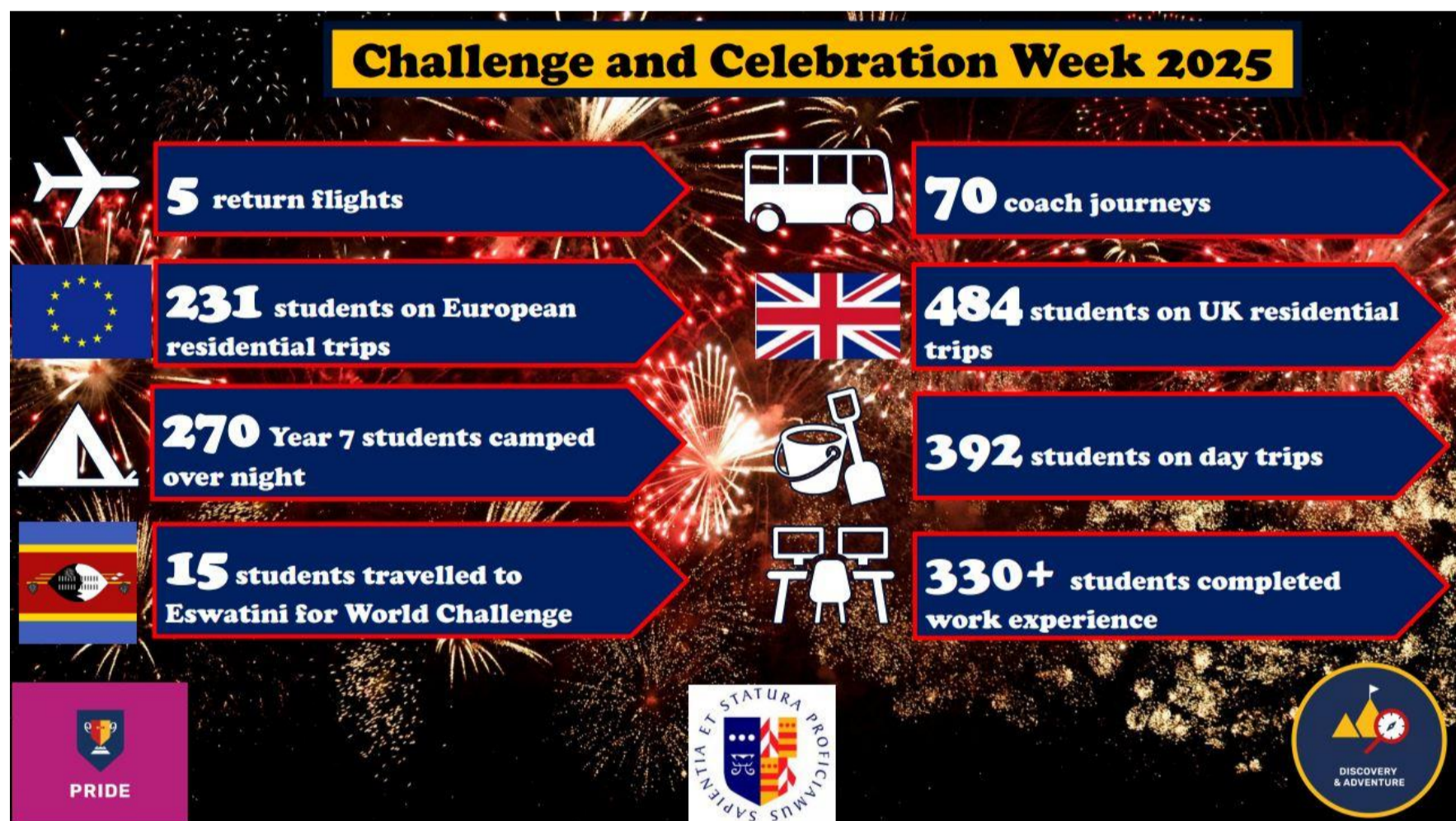
Our students' academic life is enriched by a wide range of opportunities in which they explore and enjoy the world around them.

Let's make memories to last a lifetime

Educational trips enhance studies beyond the classroom, making learning enjoyable and relevant.

- Humanities run popular excursions to Iceland and the Belgium Battlefields.
- Foreign exchanges take place with schools in Coutances (Normandy) and Madrid.
- Sporting experiences range from visiting Wimbledon, netball and rugby tours and skiing in Europe.
- There is the opportunity to take advantage of the various theatre, art and fieldwork trips.

The end of an academic year finishes with our adored 'Challenge and Celebration week', with local, national and European trips on offer for students in years 7-10 and 12. A snapshot of 2025 highlights is below.



IGS School rebuilding programme:

School rebuilding programme:

To view more information about the IGS school rebuilding programme, please follow the links below. You can also watch an architect's impression video on Youtube [HERE](#). We are **very** excited for what the future holds for our outstanding school. We know that this improvement to the school buildings will provide an enhanced environment and facilities for all students, staff and the wider community.

<https://www.ilkleygrammarschool.com/school-rebuilding-programme/>

<https://ilkleygrammarplans.co.uk/>



IGS School rebuilding programme architect's impressions:



PRIDE



RESPECT



COURAGE



RESPONSIBILITY



KINDNESS

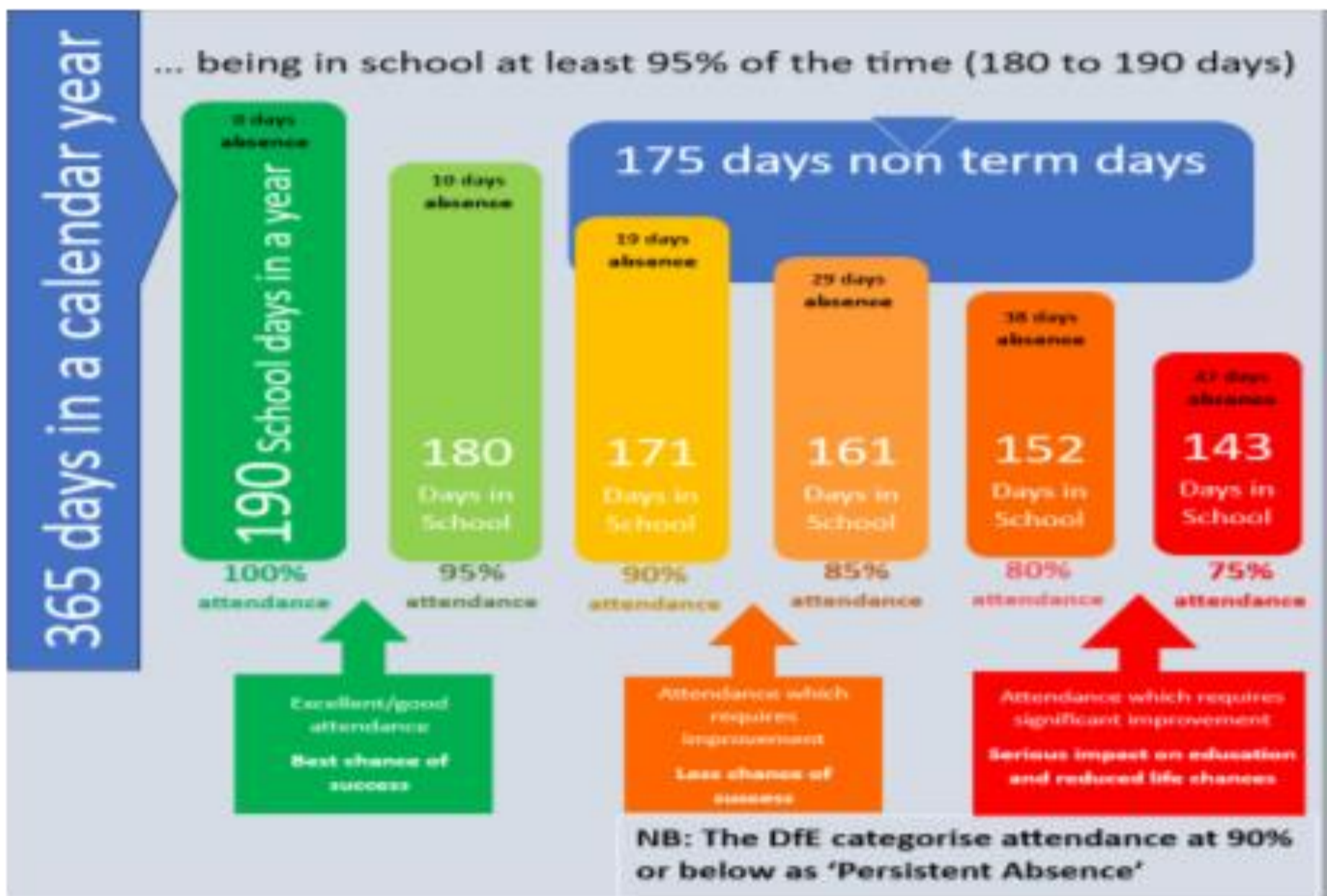


RESILIENCE

Attendance at IGS:

The link between good attendance and achievement is widely documented. At IGS we support students to have exceptional attendance for their entire time at secondary school. We also recognise, at times some of our students may struggle to attend school and to support the students to return to school there is a large pastoral, SEND, attendance, safeguarding and counselling team who are ready and willing to help. If you need support reach out to your child's Head of Year or a member of the attendance team.

More details regarding attendance are available on the website [here](#)



Ilkley Grammar School
Cowpasture Road
Ilkley, West Yorkshire
LS29 8TR
Tel: 01943 608424
Email: transition@igs.mt.co.uk
admin@igs.mt.co.uk
www.ilkleygrammarschool.com

